

Superconductor $\text{Pb}_{10-x}\text{Cu}_x(\text{PO}_4)_6\text{O}$ showing levitation at room temperature and atmospheric pressure and mechanism

Sukbae Lee,^{1,a)} Jihoon Kim,¹ Hyun-Tak Kim,^{2,3,b)} Sungeon Im,¹ SooMin An,¹ and Keun Ho Auh^{1,4}

¹Quantum Energy Research Centre, Inc., Seoul 05822, South Korea

²ICT Basic Research Lab. ETRI, Daejeon 34129, South Korea

³Department of Physics, College of William & Mary, Williamsburg, VA 23185, USA

⁴Hanyang University, Seoul 04763, South Korea

a)Author to whom correspondence should be addressed : stsaram@qcentre.co.kr

b)Author to whom correspondence should be addressed : hkim22@wm.edu, hkim0711@snu.ac.kr

Abstract

A material called LK-99®, a modified-lead apatite crystal structure with the composition $(\text{Pb}_{10-x}\text{Cu}_x(\text{PO}_4)_6\text{O})$ ($0.9 < x < 1.1$), has been synthesized using the solid-state method. The material exhibits the Ohmic metal characteristic of Pb(6s1) above its superconducting critical temperature, T_c , and the levitation phenomenon as Meissner effect of a superconductor at room temperature and atmospheric pressure below T_c . A LK-99® sample shows T_c above 126.85°C (400K). We analyze that the possibility of room-temperature superconductivity in this material is attributed to two factors: the first being the volume contraction resulting from an insulator-metal transition achieved by substituting Pb with Cu, and the second being on-site repulsive Coulomb interaction enhanced by the structural deformation in the one-dimensional(D) chain (Pb2–O_{1/2}–Pb2 along the c-axis) structure owing to superconducting condensation at T_c . The mechanism of the room-temperature T_c is discussed by 1-D BR-BCS theory.

I. INTRODUCTION

For over 110 years since Onnes's 1911 discovery of superconductivity, scientists have searched for room-temperature superconductors, materials that exhibit zero resistance to electrical current. Superconductors have been discovered in various metal elements and compound crystals. In 1986, a cuprate superconductor with a superconducting critical temperature, T_c , over 40 K was found.^{1,2} In 2015, a hydride of H₂S was shown to demonstrate $T_c \approx 203$ K at a pressure of 155 GPa.³ In 2023, a T_c of 294 K at 10 kbar was measured on a nitrogen-doped lutetium hydride;⁴ moreover, a superconductor [LK-99®] of over $T_c=300$ K was successfully synthesized (language: Korean).⁵

BCS(Bardeen-Cooper-Schrieffer) theory, which provides a microscopic explanation of superconductivity, was introduced in 1957.⁶ The Brinkman-Rice(BR)-BCS theory accounting for T_c of over room temperature was discovered in 2021.⁷ Moreover, in 2021, a theory was published that predicts T_c as approximately 10% of Fermi temperature.⁸ In addition, whether the pairing symmetry of the superconducting energy gap in cuprate superconductors is d -wave or s -wave has been debated for over 30 years; recent studies suggest that it may lean towards s -wave symmetry.^{9,10,11}

To discover a room-temperature superconductor, observing the emergence of a metallic phase through an insulator-to-metal transition (IMT) at temperatures higher than room temperature is crucial.^{12,13} Moreover, to explain this phenomenon, the discovery of a new material that exhibits room-temperature superconductivity at atmospheric pressure, along with a comprehensive mechanism, is required.

In this paper, we present a synthesis method for a Cu-doped lead apatite (LA) superconductor with a T_c exceeding room temperature. We conduct levitation experiments and analyze the zero resistance properties of the material. Moreover, we unveil the mechanism by which the metal phase is formed through an insulator-to-metal transition (IMT) without undergoing a structural phase transition in LA. Furthermore, we provide a phase diagram for the superconductor. Finally, we briefly discuss the mechanism of room-temperature superconductivity based on the BR-BCS theory⁷.

II. RESULTS and DISCUSSIONS

A. LK-99[®] : Synthesis

For sample manufacture, we synthesized $\text{Pb}_{10-x}\text{Cu}_x(\text{PO}_4)_6\text{O}$ ($0.9 < x < 1.1$), known as LK-99[®], using the solid-state method. The raw materials used in the synthesis were PbO (Junsei, GR), PbSO_4 (Kanto, GR), Cu (Daejung, EP), and P (Junsei, EP).⁵ The solid-state method is explained in Fig. 1. The process of sample synthesis comprises three steps. **Step 1:** To obtain Lanarkite $\text{Pb}_2(\text{SO}_4)\text{O} = \text{PbO} + \text{Pb}(\text{SO}_4)$, PbO and $\text{Pb}(\text{SO}_4)$ powders were uniformly mixed in a ceramic crucible with a rate of 50% each. The mixed powder was heated in a furnace at 725°C for 24 hours in the presence of air [Fig. 1(b)]. During the heating process, the mixed materials underwent a chemical reaction,

yielding lanarkite. **Step 2:** To synthesize Cu_3P , Cu and P powders were mixed in a crucible as per each component rate. The mixed powder was sealed in a crystal tube of 20 cm per gram with a vacuum of 10^{-3} torr [Fig. 1(a)]. The sealed tube containing the mixed materials was heated in a furnace at 550°C for 48 hours [Fig. 1(c)]. During this process, the mixed materials underwent a transformation and formed Cu_3P crystals. **Step 3:** The Lanarkite and the Cu_3P crystals were ground to make powder and mixed in a crucible. Then, the mixed powders were sealed in a crystal tube of a vacuum of 10^{-3} torr [Fig. 1(a)]. The sealed tube containing the mixed powder was heated in a furnace at 925°C for 5-20 hours [Fig. 1(d)]. During this process, the mixed powder reacted and transformed into the final material of $\text{Pb}_{10-x}\text{Cu}_x(\text{PO}_4)_6\text{O}$. The sulfur element present in PbSO_4 was evaporated during the reaction. The various shapes observed during the process are depicted in photos [Figs. 1(e-i)].

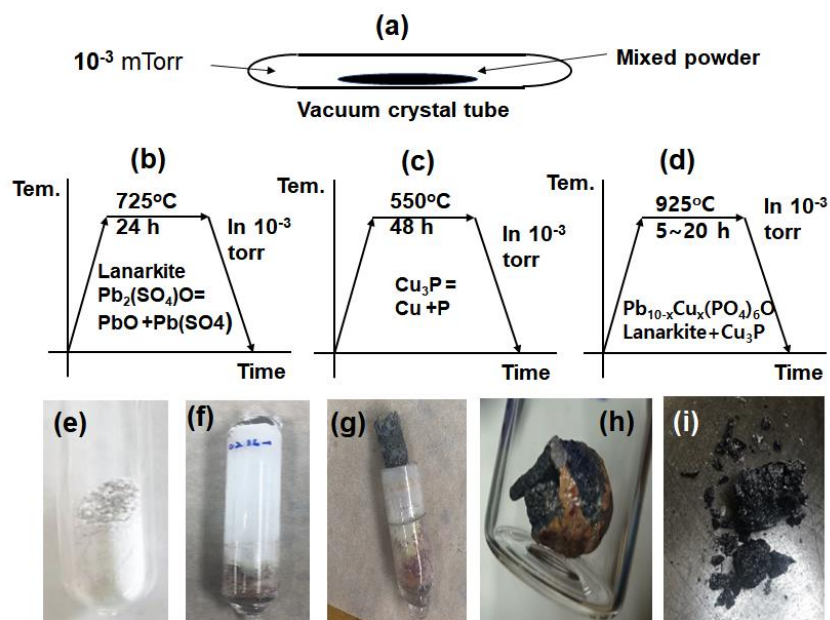


FIG.1. (a) Layout of sealed vacuum crystal tube with mixed power. (b), (c), (d) Heat treatment conditions of Lanarkite, Cu_3P , $\text{Pb}_{10-x}\text{Cu}_x(\text{PO}_4)_6\text{O}$ ($0.9 < x < 1.1$), respectively. (e) All ingredients premixed powder before reaction, appearing white to light gray. (f) Picture of the sealed sample after the reaction, (g) Sample removal procedure from the furnace, (h) A shape of the sample of the sealed quartz tube, (i) A sample shape in each process.

B. LK-99[®] : Analysis of crystal structure

The manufactured powder's crystallinity and structure were analyzed by X-ray diffraction (XRD) measurements and data fitting. Fig. 2(a) shows a comparison of XRD data measured with LK-99[®] sample 1 (over-doped material) and COD (Crystallography Open Database) data of the pure lead-apatite supported by QualX software. The XRD analysis of the sample showed multiple black peaks [Fig. 2(a)], indicating that it is a polycrystalline material. The XRD pattern of sample 1 closely matches that of modified-lead apatite (MLA) with slight peak shifts. However, the peak indicated by symbol A in sample 1 is shifted to a larger angle, and a new peak, indicated by symbol B, appears, suggesting a change in the lattice structure of sample 1, [Fig. 2(b)]. The shifts indicate a decrease of lattice constant, which is interpreted as evidence of volume contraction. Comparing the XRD pattern of sample 1 with MLA in the VESTA program confirms that sample 1 exhibits an MLA structure, [Fig. 2(c)]. Specifically, an LA structure is formed as $A_{10}(BO_4)C$, one of the frameworks of the hexagonal structure of element A.^{14,15}

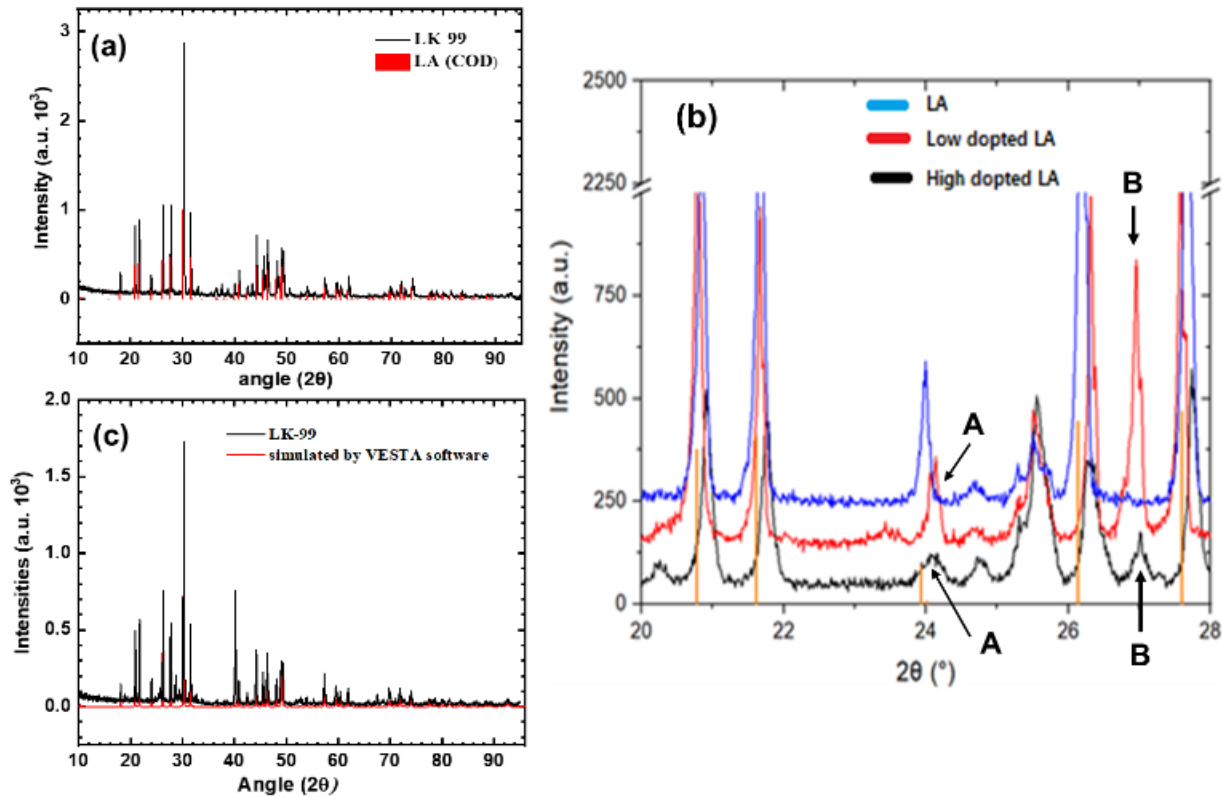


FIG. 2. (a) Comparison of XRD pattern measured with sample 1 and lead apatite data in Crystallography Open Database. (b) Magnified pattern shows a peak shift and a new peak. (c) The XRD pattern is compared with the modified apatite pattern obtained from BESTA program. It is closely fitted.

The XRD analysis reveals that sample 1 has a hexagonal structure of (P63/m, 176) with cell lattice parameters of $a=9.843 \text{ \AA}$ and $c=7.428 \text{ \AA}$ [Figs. 3(a) and 3(b)], while the LA's parameters are $a=9.865 \text{ \AA}$ and $c=7.431 \text{ \AA}$. The volume of sample 1 shrinks by 0.48%, resulting from substituting Pb(M2) with Cu(M1). The phenomenon of shrinkage has already been studied in previous research on apatite materials.¹⁶ Although it is classified as an LA structure, $\text{Pb}_{10}(\text{PO}_4)_6\text{O}$, is an insulator; conversely, Cu-doped LA, $\text{Pb}_{10-x}\text{Cu}_x(\text{PO}_4)_6\text{O}$, is a superconductor at room temperature and a metal above T_c . Moreover, it is structurally condensed by substituting M1^{2+} (corresponding to Pb^{2+} , at Pb(1) position in LA atomic classification in crystallography information file, cif.) at the black-colored position in Figs. 3(a) and 3(b) by Cu^{2+} ion (M2^{2+} , one reddish-brown-colored among four

Pb(1) positions in Fig. 3(a). Owing to the shrinkage, it becomes a superconductor.⁷ Further details will be explained in a following section.

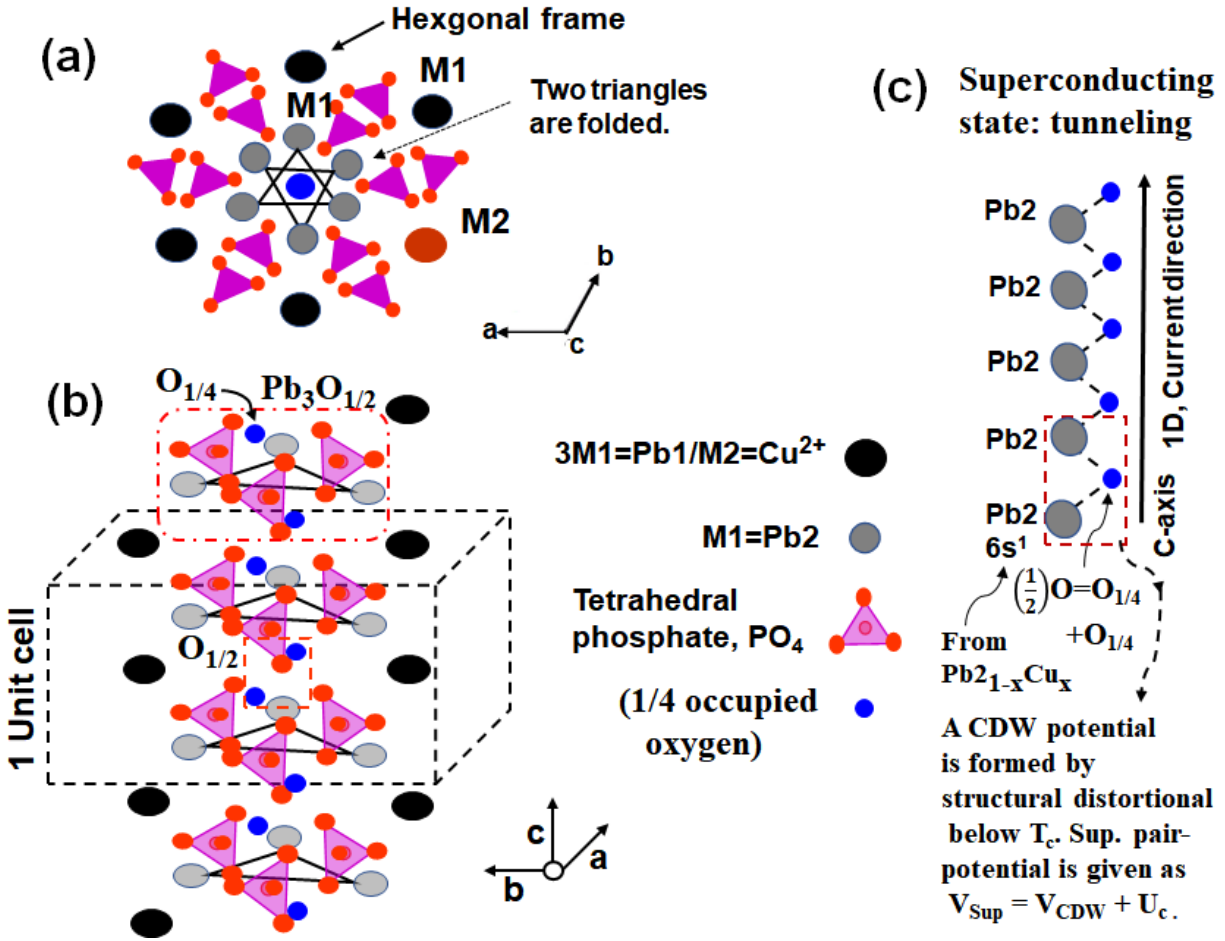


FIG. 3. (a) Top view of Cu-doped LA, $\text{Pb}_{10-x}\text{Cu}_x(\text{PO}_4)_6\text{O}$, to c-axis. Inside, hexagonal six M1s corresponding to Pb2s (2 indicates the number of classifications of Pb(2) in cif.) are folded by two layers composed of $\text{Pb}_3\text{O}_{1/2}$ expressed as a triangle, [Fig. 3(b)]. (b) Side view of the Cu-doped LA. 1 unit cell is also displayed. (c) In the superconducting state, layout to explain a one-dimensional superconducting chain along the c-axis. The CDW is the charge-density-wave and $V_{CDW} < 0$ is the CDW potential. $V_{Sup} < 0$ is a potential containing the superconducting carrier.⁷ $U_c > 0$ is the critical on-site repulsive Coulomb energy in the BR picture.¹⁷ This was re-drawn with Fig. 4 in Ref. 5.

C. LK-99[®] : Meissner effect

Figures 4(a) and 4(b) illustrate the temperature-dependent diamagnetic susceptibilities of zero-

<https://arxiv.org/abs/2307.12037>

field cool (ZFC) and field cool (FC) in sample 2 (obtained in a quartz vessel with low doping of lead apatite) and sample 3 (manufactured using higher-purity raw materials). The measurements were conducted in a temperature range of -73.15°C (200K) to 126.85°C (400K) and involved the observation of the Meissner effect, expelling the magnetic field. Fig. 4(c) shows the levitation phenomenon measured at room temperature and atmospheric pressure for sample 4 (heat-treated with sample 2), indicating the presence of a superconducting phase at room temperature and atmospheric pressure, although the levitation is not perfect. Video of the levitation is attached as Fig. 4(d). The susceptibilities were measured for samples 2 and 3 using MPMS-Evercool at Kaist Analysis center for Research Advancement.

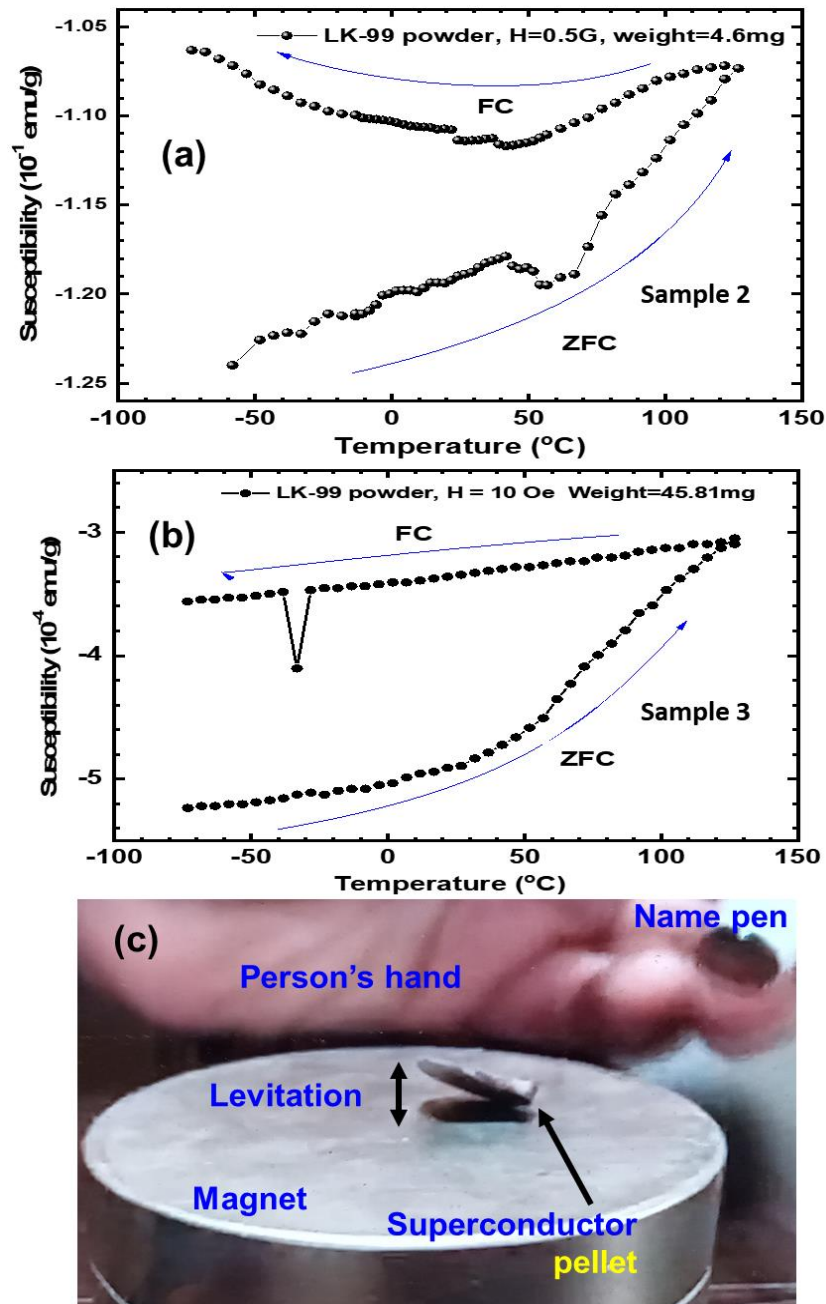


FIG. 4. (a) Temperature dependence of diamagnetic susceptibilities measured in samples 2 (a) and 3 (b). (c) Levitation phenomenon obtained from annealed sample 2 (sample 4). (d) A video for levitation is attached.

D. LK-99[®] : Resistivity

Figure 5 shows the temperature dependence of the resistivity of sample 2 ($4.8 \times 10.1 \times 1.2\text{mm}$) measured at 30 mA by the four-probe method. A jump in resistivity appears near $T_c=104.8^\circ\text{C}$ (377.95K). Above T_c , the linear characteristic of metal originating from the IMT is displayed. Below T_c , three different behaviors are exhibited. In the first region below red-arrow C (near 60°C), equivalent to region F in the inset of Fig. 5, the resistivity with noise signals can be regarded as zero. In the second region, indicated by the red arrows C and D (near 90°C) and corresponding to region G in the inset of Fig. 5, the resistivity of the sample monotonically increases with temperature. This indicates the occurrence of resistance, suggesting a breakdown of the superconducting energy gap as the temperature increases. At the third region between red-arrow D and T_c , corresponding to region H in the inset of Fig. 5, the resistivity does not transparently change with increasing temperature; however, $d\sigma/dT$ fluctuates at the final stage of the breakdown of the energy gap. In the first region, where signals resembling noise are observed, the zero-resistivity region is approximately 88% (333K/378K) of T_c under Kelvin units. This is approximately three times larger than the typical value of about 30% observed in low T_c superconductors. The presence of noise in the zero-resistivity region is often attributed to phonon vibrations at higher temperatures, as indicated by region F in inset 5; the signals like noise were directly measured⁵. The presence of the zero-resistivity region is evidence of an *s*-wave superconductor because a node-type superconductor with no-gap metal at node, such as $d_{x^2-y^2}$ pairing symmetry has no zero-resistivity region due to increase of metal resistivity with increasing temperature.^{10,11}

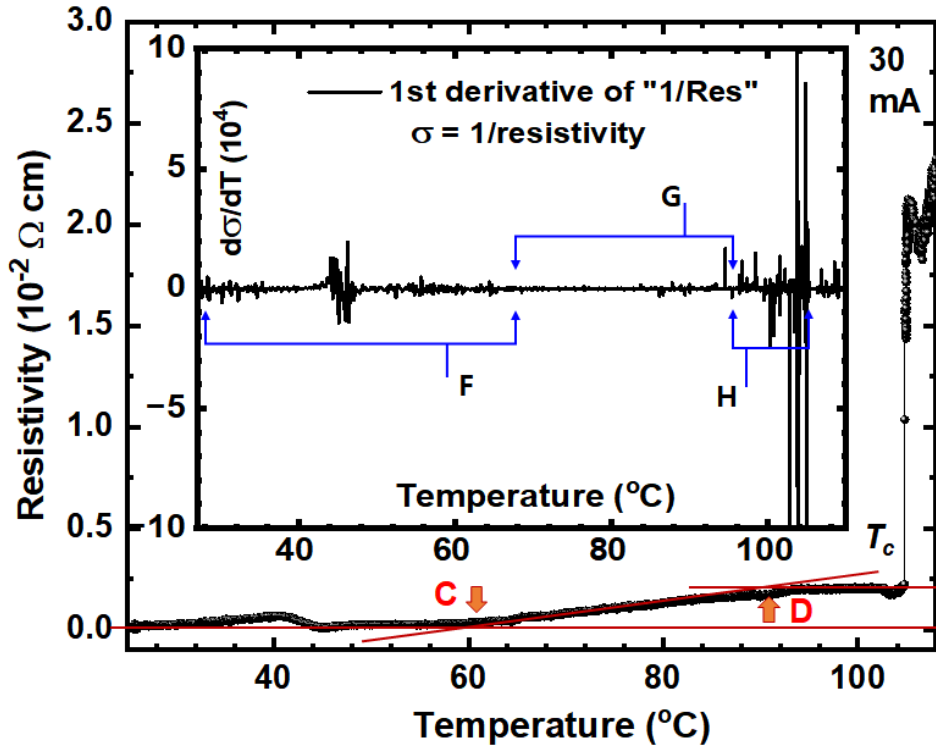


FIG. 5. Temperature dependence of resistivity. Inset shows $d\sigma/dT=d(1/\text{resistivity})/dT$, regarded as the density of states (DOS). The temperature dependence of $d\sigma/dT$ is interpreted as that of DOS. Resistivity figure was re-drawn with Fig. 6(a) in Ref. 5.

E. LK-99[®] : I-V characteristics

Figure 6(a) shows the temperature dependence of an I-V curve measured in sample 1. Above $T_{c, \text{current}}$, the linear characteristic of a metal is displayed. As the temperature increases, $T_{c, \text{current}}$ decreases. Moreover, the magnitude of the jump of $T_{c, \text{current}}$ decreases with increasing current. In particular, at 105°C, the jump is very small. This indicates that the magnitude of the jump does not monotonically decrease. This is known as exponential decrease in a gap-nogap transition material.¹⁸ We conducted a detailed analysis of the current-voltage (I-V) curve below $T_{c, \text{current}}$, measured at 25°C, focusing on the logarithmic y-axis. The curve can be divided into several regions: I, J, K, L, M, and N. In regions I, J, and K, we observe an increase in resistance, indicating the breaking of the superconducting energy gap due to Joule heating when the current exceeds a certain threshold. The curve is obvious, as indicated by red-arrow O in an I-V curve measured at

45°C. More high current of region L accelerates the breaking, which can be interpreted as an avalanche region. At region M of much higher current, voltage does not almost change. This indicates that the density of states (DOS)= dI/dV is constant near $T_{c, current}$, suggesting that the pairing symmetry is s -wave, [Figs. 6(b) and 6(c)]. If the superconducting gap has a node, dI/dV near $T_{c, current}$ should increase. 오류! 책갈피가 정의되어 있지 않습니다. After the jump, region N is a metal with the linear Ohmic characteristic. The transition between the superconducting gap and the nongap metal is the gap-nogap transition [Fig. 6(a)]. The transition is almost identical to the characteristic of the IMT.^{19,20} Moreover, the fluctuation of regions I, J, and K, [Fig. 6(c)], is owing to temperature inhomogeneity caused by Joule heat generated by both current and heat applied by the temperature controller. Fig. 6(d) shows the magnetic field dependence of sample 1. Above the jump of T_c , the I-V curve exhibits Ohmic characteristics, indicating a metallic behavior. As the magnetic field increases, $T_{c, current}$, decreases, exhibiting the typical characteristic of a superconductor. Fig. 6(e) exhibits a maximum T_c of 127°C in heat-treated sample 1. Because the jump remains, we deduce that T_c exceeds 127°C. Above T_c , the linear characteristic of a metal is displayed. A summary of the results is shown in the phase diagram [Fig. 7].

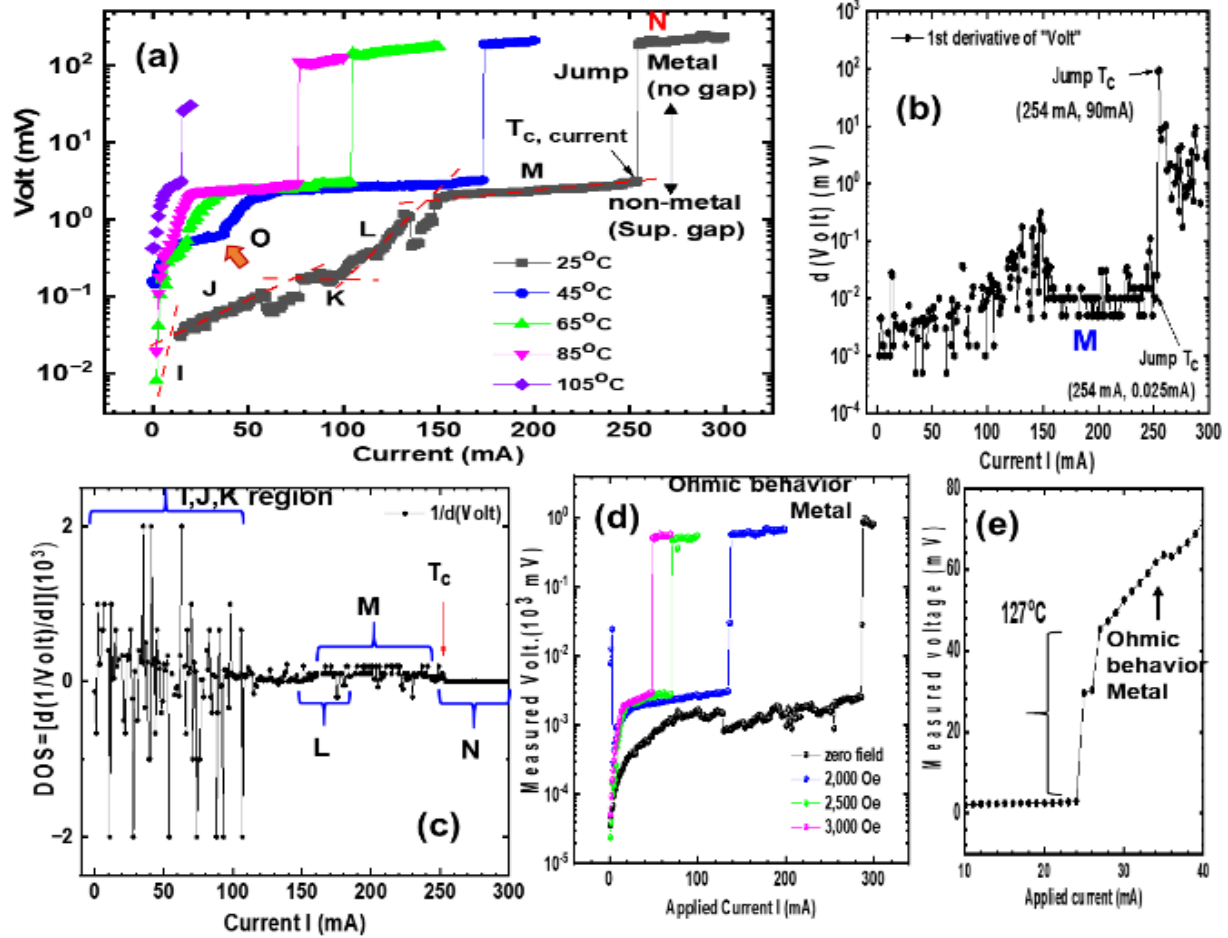


FIG. 6. (a) The temperature dependence of an I-V y-axis log curve, obtained through a method measuring voltage with applying current. (b) Differential curve of data at 25°C. (c) $DOS = d\sigma/dI$, the derivative curve of conductance. $dI=1$ mA is constant. Regions I, J, K and M present the characteristic of *s*-wave symmetry. (d) Magnetic field dependence of I-V curves. (e) 127°C is a temperature below a T_c owing to temperature limitation of the measurement system.

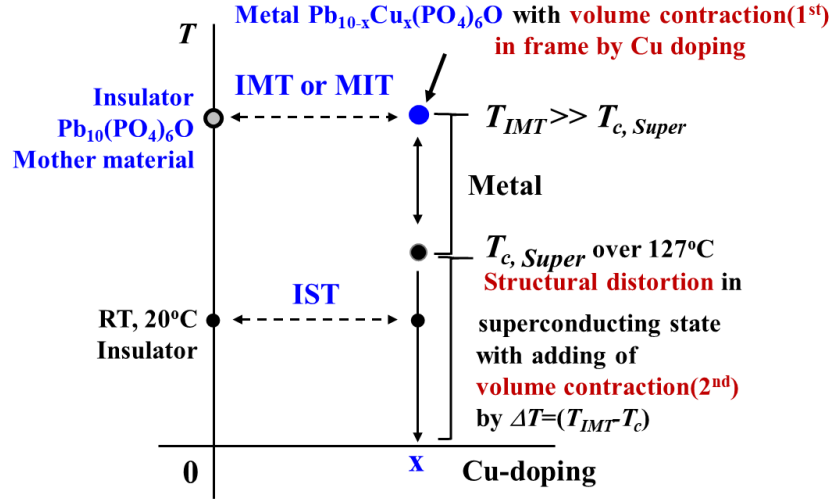


FIG. 7. Phase diagram of Cu^{2+} -doped LA $\text{Pb}_{10-x}\text{Cu}_x(\text{PO}_4)_6\text{O}$. IMT is the insulator-to-metal transition and MIT is the metal-to-insulator transition. IMT and MIT follow the same concepts, indicating a gap-nogap transition. IST is an insulator-superconductor transition (gap-gap transition), indicating a change of electric characteristics in the same gap structure.

III. POSSIBLE MECHANISM OF SUPERCONDUCTIVITY

A. LK-99[®] : One-dimensional metal

The mother material of the LA structure, as shown in Fig. 3, is disassembled by the following chemical formula,

$$\begin{aligned}
 \text{Pb}_{10}(\text{PO}_4)_6\text{O} &\equiv [\text{Pb}_{14}]^{\text{F}}[\text{Pb}_{26}]^{\text{T}}(\text{PO}_4)_6\text{O} \\
 &= [\text{Pb}_{14}(\text{PO}_4)_{8/3}]^{\text{F}} + [\text{Pb}_{26}(\text{PO}_4)_{10/3}\text{O}]^{\text{T}}, \\
 &= [\text{Pb}_{14}(\text{PO}_4)_{8/3}]^{\text{F}} + [\text{Pb}_{23}(\text{PO}_4)_{5/3}\text{O}_{1/2} + \text{Pb}_{23}(\text{PO}_4)_{5/3}\text{O}_{1/2}]^{\text{T}}, \\
 &= [\text{Pb}_{14}(\text{PO}_4)_{(2+2/3)}]^{\text{F}} + [\text{Pb}_{23}(\text{PO}_4)_{(1+2/3)}\text{O}_{1/2} + \text{Pb}_{23}(\text{PO}_4)_{(1+2/3)}\text{O}_{1/2}]^{\text{T}}, \text{ ---- (1)}
 \end{aligned}$$

where F names the frame part and T denotes a part of the tunnel along the c-axis. This highly stable structure consists of two layers of frames with an interior region.^{21, 22, 23} Formula (1) is characterized by a one-dimensional bonding of Pb2 and $\text{O}_{1/2}$ in the T part. When parts of the Pb1 (meaning the Pb(1) site in LA cif.) and the Pb2 (meaning the Pb(2) position in LA cif.) sites are

randomly substituted by Cu^{2+} ($3d^9$) (one hole) elements, chemical formula of the Cu^{2+} -doped LA structure is expressed as follows:

$$\begin{aligned} \text{Pb}_{10-x}\text{Cu}_x(\text{PO}_4)_6\text{O} &= [\text{Pb}_{4-a}\text{Cu}_a(\text{PO}_4)_{8/3}]^{\text{F}} + [\text{Pb}_{6-b}\text{Cu}_b(\text{PO}_4)_{10/3}\text{O}]^{\text{T}}, \text{ where } a+b=x \\ &= [\text{Pb}_{4-a}\text{Cu}_a(\text{PO}_4)_{8/3}]^{\text{F}} + [\text{Pb}_{3-c}\text{Cu}_c(\text{PO}_4)_{5/3}\text{O}_{1/2} + \text{Pb}_{3-c}\text{Cu}_c(\text{PO}_4)_{5/3}\text{O}_{1/2}]^{\text{T}}, \text{ where } c=b/2, a \text{ and } b \neq 0 \\ &= [\text{Pb}_{4-a}\text{Cu}_a(\text{PO}_4)_{(2+2/3)}]^{\text{F}} + [\text{Pb}_{3-c}\text{Cu}_c(\text{PO}_4)_{(1+2/3)}\text{O}_{1/2} + \text{Pb}_{3-c}\text{Cu}_c(\text{PO}_4)_{(1+2/3)}\text{O}_{1/2}]^{\text{T}}. \text{ ---- (2)} \end{aligned}$$

Hole doping quantities are determined as the outmost orbitals of $-3a$ ($=2(4-a)+(-1)a+(-3)(2+2/3)$) in the frame part and $-3c$ ($=2(3-c)+(-1)c+(-3)(1+2/3)+(-2)(1/2)$) in the T part. When IMT occurs by Cu^{2+} doping, IMT is generated at both the F and the T parts. Generally, because an insulator has a larger volume than that of a metal, the IMT is accompanied by a volume contraction without the structural phase transition. The substitutions at the Pb1 sites, as indicated by the reddish-brown color in Fig. 3(a), induce a volume contraction(1st) in the frame through the IMT(1st).¹⁶ Moreover, substitutions at the Pb2 sites lead to an IMT(2nd) in the T part. The evidence of the volume contraction is shown in Fig. 2(b). If the doping quantities of a and c in formula (2) differ, the extent of the IMT and the magnitude of volume contraction may vary. If $a > c$, below a critical doping level, the volume contraction(1st) in the frame may be larger than the volume contraction(2nd) in the T part.

The outmost orbital of Pb is $6s^26p^2$. One electron in the $6p^2$ orbital of Pb2 is coupled to the O of PbO, whereas the other contributes to the bonding of tetrahedral phosphate, PO_4 , [formulas (1) and (2)]. Consequently, the inside structure is stabilized. Lone-pair electrons of $6s^2$ in Pb play an important role on the phase transition; the $6s^2$ electrons are spherically symmetric and displaced structure relative to the position of Pb atoms and contributing to polar interaction.²³ Moreover, Cu^{2+} can form a bond with one of lone-pair electrons of $6s^2$ in Pb2, transforming the outmost orbital of Pb2 to $6s^1$. Therefore, $\text{Pb}_{1-x}^{+2}\text{Cu}_x^{+2}\text{O}$ ([2 electrons of $6s^2$] + [one hole of $3d^9$] = $6s^1$ after combining of electron and hole as polar interaction) at a Pb2 site acquires the electronic structure of metal of half filling, $6s^1$. This is referred to as the hole-driven insulator-to-metal transition (IMT).^{19,20,24} Hence, $\text{Pb}_3(\text{O}_{1/2} = \text{O}_{1/4} + \text{O}_{1/4})$ structures are generated and the oxygen is located at slightly higher or slightly lower position than Pb2, [blue balls in red dot box in Fig. 3(b)]. The nearest two oxygens (blue balls) at the $\text{O}_{1/4}$ position in $\text{O}_{1/2}$ of 1-D channel, as shown in the red-

dot box of unit cell of Fig. 3b, are generally repulsive. In metal case, when one oxygen of the $O_{1/4}$ vibrates (the distance between Pb2 and $O_{1/4}$ expands and contracts), the other anti-vibrates (the distance contracts and expands, respectively). This indicates that oxygen breathes; the distance between Pb2 and $O_{1/4}$ is same. One unit cell has two $Pb_3O_{1/2}$ structures [Fig. 3(b)]. In the metal state, the $Pb2(6s^1)$ carrier flows through the conduction band formed by Pb2–Pb2 and oxygens in the Pb2 (in lower $Pb_3O_{1/2}$) $\rightarrow O_{1/2} \rightarrow$ Pb2 (in higher $Pb_3O_{1/2}$) structure breath along c-axis, [Fig. 3(c)]. In the superconducting state, carriers of $Pb2(6s^1)$ s at nearest neighbor sites form a bi-polaron in a superconducting bound state ($V_{Super\ potential} = V_{CDW\ potential} + U_c$, critical on-site Coulomb energy), where charge-density-wave state (CDW) has the structure of long and short distances in (Pb2- $O_{1/4}$ or Pb2- $O_{1/2}$) between nearest neighbor Pb sites formed by breathing mode distortion (stopping breath) between oxygens in the $Pb_3O_{1/2}$ structures). Then, the distance between Pb2 and $O_{1/4}$ differs, which is the structural distortion and the on-site Coulomb interaction, U , between carriers in metal is changed to U_c . The formation of the superconducting bound state is facilitated by the enhanced on-site Coulomb repulsive interaction, resulting from both the structural contraction (1st) at the frame of the LA induced by Cu^{2+} doping and the structural distortion accompanied by volume contraction (2nd) owing to the temperature difference ($\Delta T = T_{IMT} - T_c$) at T_c . These factors contribute to superconducting condensation, as depicted in the phase diagram shown in Fig. 7.⁷ The bi-polaron is able to tunnel through a barrier between two $Pb_3O_{1/2}$ structures in a one-dimensional chain along the c-axis, where the Pb2 in the lower $Pb_3O_{1/2}$ is connected to $O_{1/2}$ and to Pb2 in the higher $Pb_3O_{1/2}$ (as shown in Figure 3(c)). Additionally, the first term of the frame part in formula (2) can exhibit superconductivity owing to the IMT; however, because it is not one-dimensional, its T_c will be much smaller compared to that of the T part in Formula (2). The underlying reasons for this behavior will be further explained in the subsequent section.

B. LK-99[®] : Strong correlation

As for a room-temperature- T_c mechanism, the MLA structure inducing the IMT is characterized by volume contractions (1st and 2nd) by substituting Pb with Cu. A known theory to explain room-temperature superconductivity, including structural volume contraction, is BR-BCS, suggesting that divergence of the DOS, caused by on-site Coulomb repulsive interaction U increased by

volume contraction, increases superconducting T_c over room temperature in the BR-BCS T_c .^{7,25} When dimensionality is considered, 1-dimension(D) DOS is proportional to $(m^*/E^*)^{0.5}$ with the divergence to ρ , where an effective mass of carrier, $m^* \equiv m/[1-(U/U_c)^2] = m/[1-\rho^4 \kappa^2]$, and kinetic energy, $E^* \equiv E_k(1-U/U_c)^2 = E_k(1-\rho^2 \kappa)^2$, $U/U_c = \rho^2 \kappa$ with percolation to increasing ρ as a function of doping x and correlation strength $\kappa \approx 1(\neq 1)$ generating the maximum number of excited carriers,¹⁷ band-filling factor $0 < \rho \leq 1$ are defined.⁷ The effective 2D-DOS^{*} = 2D-DOS_(non-interaction_BCS)/[$1-\rho^4 \kappa^2$] with the divergence to ρ is given because of 2D-DOS^{*} $\propto \underline{m}^*$. 3D-DOS^{*} $\propto (m^*)^{1.5}(E^*)^{0.5}$ has the divergence to ρ . 1D-DOS^{*} = 1D-DOS_(non-interaction_BCS)/[($1-\rho^4 \kappa^2$)^{0.5}($1-\rho^2 \kappa$)] where $\kappa \approx 1(\neq 1)$. 1D-DOS^{*} is larger than 2D-DOS^{*} and 3D-DOS^{*} in the same condition. When 1D-DOS^{*} = $N^*(0)$ is applied to electron-phonon coupling $\lambda^* \equiv N^*(0)V = A\lambda_{BCS}$ in the BCS- T_c formula, where $A = 1/[(1-\rho^4 \kappa^2)^{0.5}(1-\rho^2 \kappa)]$ and V is the attractive electron-phonon potential and is known as about 0.2 eV²⁶, T_c will increase above room temperature when ρ approaches one, on the basis of the BR-BCS T_c .⁷ The BR-BCS theory uses a bi-polaron strongly coupled by the attractive charge-density-wave potential (short-range electron-phonon interaction), instead of the Cooper pair defined as coupling of excited two electrons bound by the attractive screened long-range electron-phonon (atom) interaction.^{7,26} Moreover, the general mechanism of superconductivity in the Fermi system with strong repulsive interaction explained in the 2D system that superconducting T_c reaches about 10% of Fermi temperature (if $T_{Fermi} \approx 10,000$ K is assumed),⁸ although this mechanism is not involved in volume contraction. The theory of hole superconductivity suggested much higher T_c than that proposed in BCS theory.²⁴ In addition, one-dimensional superconductivity and T_c enhancement were already disclosed.^{27,28,29,30}

IV. CONCLUSION

We have successfully developed a method for synthesizing a superconducting material with an MLA structure, exhibiting both one-dimensional characteristics and a T_c above room temperature at atmospheric pressure. The presence of superconductivity was confirmed through observations of the levitation phenomenon and analysis of zero resistivity. The unique features of the MLA structure include volume contraction (1st) resulting from substituting Pb with Cu. On-site Coulomb repulsive interaction increased by volume contractions (1st and 2nd) may cause the superconducting

phenomenon, as mentioned in the BR-BCS theory. Furthermore, the room-temperature superconductor opens up possibilities for high-performance superconducting wires and magnets operating at room temperature, with potential applications in energy transmission, transportation, and scientific research.

ACKNOWLEDGEMENTS

We acknowledge late Prof. Chair Tong-seek for initiating research of a 1-dimensional superconductor of over room temperature at atmospheric pressure. In particular, his enthusiasm on superconductor study impressed many researchers. Moreover, we thank Mr. Ki Se-woong, Mr. Lee Byungkyu (CEO of ProCell Therapeutics, Inc.), Mr. Yoon Sang-ok (Chairman of FINE Inc.) so much for financial supporting, and Bang Jaekyu and Kim Gyeongcheol so much for wholeheartedly sharing the burdens and difficulties in this investigation. This research was primarily supported by research-and-development funds from Quantum Energy Research Centre Inc.. SQUID measurements were supported by the National Research Foundation of Korea grant funded by the Korea government(MSIT) (No. 2019R111A1A01059675) and Korea University Grant (Projects of an author, Young-Wan, Kwon taking charge of SQUID measurements). We thank Prof. Mumtaz Qazilbash for valuable comments. An author, Hyun-Tak Kim (H. T. Kim),’s knowledge on mechanisms of both superconductivity and the metal-insulator (gap-nogap) transition highly contributed to writing the mechanism part. The knowledge was acquired over 20 years by processes of performing national projects including project [Grant 2017-0-00830] funded by Institute for Information and Communications Technology Promotion (IITP) in MSIT of Korea government in ETRI. H. T. Kim left ETRI on Nov. of 2022.

AUTHOR DECLARATIONS

Conflict of Interest

The authors have no conflicts to disclose.

Author Contributions

Sukbae, Lee: Conceptualization(lead); Data curation(equal); Funding acquisition(lead); Investigation(equal); Methodology(equal); Project administration(lead); Resources(equal); Software(equal); Supervision(lead); Validation(equal); Visualization(support); Writing – original draft(equal); Writing – review & editing(equal), Ji-hoon, Kim: Conceptualization(equal); Data curation(equal); Formal analysis(equal); Investigation(equal); Methodology(equal); Project administration(equal); Software(equal); Supervision(equal); Validation(equal); Visualization(equal), Sungyeon, Im: Data curation(support); Funding acquisition(equal); Resources(equal); Supervision(equal); Validation(equal) SooMin, An: Data curation(support); Funding acquisition(support); Investigation(support); Project administration(support); Resources(support); Validation(support); Writing – original draft(support); Keun Ho, Auh: Funding acquisition(support); Methodology(equal); Project administration(support); Supervision(equal); Writing – original draft(lead). Hyun-Tak Kim analyzed s -wave symmetry, and made room-tem.- T_c mechanism including metal-insulator transition and CDW structural distortion through structure analysis, wrote this manuscript with authors.

DATA AVAILABILITY

The data that support this study are available from the corresponding authors upon reasonable request.

-
- ¹J. G. Bednorz and K. A. Müller, Possible high T_c superconductivity in the Ba–La–Cu–O system, [Z. Phys. B. 64, 189 \(1986\)](#).
- ²M. K. Wu, J. R. Ashburn, C. J. Torng, P. H. Hor, R. L. Meng, L. Gao, Z. J. Huang, Y. Q. Wang, and C. W. Chu, Superconductivity at 93 K in a new mixed-phase Y-Ba-Cu-O compound system at atmospheric pressure, [Phys. Rev. Lett. 58, 908 \(1987\)](#).
- ³A.P. Drozdov, M. I. Erements, I. A. Troyan, V. Ksenofontov, S. I. Shylin, Conventional superconductivity at 203 K at high pressures, [arXiv:1506.08190](#).
- ⁴N. Dasenbrock-Gammon, E. Snider, R. McBride, H. Pasan, D. Durkee, N. Khalvashi-Sutter, S. Munasinghe, S. E. Dissanayake, K. V. Lawler, A. Salamat, and R. P. Dias, Evidence of near-atmospheric superconductivity in a N-doped lutetium hydride, [Nature 615, 244–250 \(2023\)](#).
- ⁵S. B. Lee, J. H. Kim, S. Y. Im, S. M. An, Y. W. Kwon, and K. H. Auh, Consideration for the development of room-temperature atmospheric-pressure superconductor (LK-99), [J. Korean Cryst. Growth Cryst. Technol., 33\(2\), 61 \(2023\)](#). (Language, Korean)
- ⁶J. Bardeen, L. N. Cooper, and J. R. Schrieffer, Microscopic Theory of Superconductivity, [Phys. Rev. 106, 162 \(1957\)](#).
- ⁷H. T. Kim, Room-temperature-superconducting T_c driven by electron correlation, [Sci. Rep. 11, 10329 \(2021\)](#).
- ⁸V. Crépel and L. Fu, New mechanism and exact theory of superconductivity from strong repulsive interaction, [Sci. Adv. 7, eabh2233 \(2021\)](#).
- ⁹H. T. Kim, Fallacies on pairing symmetry and intrinsic electronic Raman spectrum in high- T_c cuprate superconductors, [Mod. Phys. Lett. B 34, 2040001 \(2020\)](#).
- ¹⁰H. T. Kim, High- T_c mechanism through analysis of diverging effective mass for $\text{YBa}_2\text{Cu}_3\text{O}_{6+x}$ and pairing symmetry in cuprate superconductors, [arXiv:1710.07754](#).
- ¹¹R. A. Klemm, Why we still don't know the symmetry of the order parameter in high temperature superconductors, Conference: [International workshop on high-temperature superconductivity: ten years after its discovery, Jaipur \(India\), 16-21 Dec 1996](#).
- ¹²D. Rybicki, M. Jurkutat, S. Reichardt, C. Kapusta, and J. Haase, Perspective on the phase diagram of cuprate high-temperature superconductors, [nature comm. 7, 11413 \(2016\)](#).
- ¹³A. Iyo, H. Fujihisa, Y. Gotoh, S. Ishida, H. Ninomiya, Y. Yoshida, H. Eisaki, and K. Kawashima, Hidden Structural and Superconducting Phase Induced in Antiperovskite Arsenide SrPd_3As , [Inorg. Chem. 61, 12149 \(2022\)](#).
- ¹⁴S. V. Krivovichev and P. C. Burns, Crystal chemistry of lead oxide phosphates: crystal structures of $\text{Pb}_4\text{O}(\text{PO}_4)_2$, $\text{Pb}_8\text{O}_5(\text{PO}_4)_2$ and $\text{Pb}_{10}(\text{PO}_4)_6\text{O}$, [Zeitschrift für Kristallographie - Crystalline Materials 218, 357 \(2003\)](#).
- ¹⁵M. A. Abdul Jabar, The Identification and Synthesis of Barium-Substituted Lead Hydroxyapatite Structure ($\text{Pb}_{10-x}\text{Ba}_x(\text{PO}_4)_6(\text{OH})_2$) by Ceramic Method, [Rafidain Journal of Science 32, 121 \(2023\)](#).
- ¹⁶S. H. Hwang, K. K. Orr, C. K. Lee, C. M. Lee, and D.W. Kim, A Study on Color in Apatite with the Addition of Transition Elements, [J. Kor. Ceramic. Soc. 23 \(1986\) 43](#). (Language, Korean).
- ¹⁷W. F. Brinkman and T. M. Rice, Application of Gutzwiller's Variational Method to the Metal-Insulator Transition, [Phys. Rev. B 2, 4302 \(1970\)](#).
- ¹⁸T. L. Wu, A. A. Stabile, C. J. Patridge, S. Banerjee, and G. Sambandamurthy, Electrically driven metal-insulator switching in $\delta\text{-K}_x\text{V}_2\text{O}_5$ nanowires, [Appl. Phys. Lett. 101, 163502 \(2012\)](#).
- ¹⁹H. T. Kim, B. G. Chae, D. H. Youn, S. L. Maeng, G. Kim, K. Y. Kang, and Y. S. Lim, Mechanism and observation of Mott transition in VO_2 -based two- and three-terminal devices, [New J. Phys. 6, 52 \(2004\)](#).
- ²⁰Z. Yang, C. Ko, and S. Ramanathan, Oxide Electronics Utilizing Ultrafast Metal-Insulator Transitions, [Annual Rev. Mater. Research 41, 337 \(2011\)](#).

- ²¹T. Baikie, M. Schreyer, F. Wei, J. S. Herrin, C. Ferraris, F. Brink, J. Topolska, R. O. Piltz, J. Price, and T. J. White, The influence of stereochemically active lone-pair electrons on crystal symmetry and twist angles in lead apatite-*2H* type structures, [Mineralogical Magazine](#) **78**, 325 (2014).
- ²²S. M. Antao and I. Dhaliwal, Lead apatites: structural variations among $Pb_5(BO_4)_3Cl$ with $B = P$ (pyromorphite), As (mimetite) and V (vanadinite), [J. Synchrotron Rad.](#) **25**, 214 (2018).
- ²³G. Cametti, M. Nagashima, and S. V. Churakov, Role of lone-pair electron localization in temperature-induced phase transitions in mimetite, [Structural science, Crystal engineering and Materials](#) **78**, 618 (2022).
- ²⁴J. E. Hirsch, Hole superconductivity, [Physics Letters A](#) **134**, 451 (1989).
- ²⁵H. T. Kim, Correcting the fatal flaw in BCS theory, [2022 APS March Meeting, Abstract: S57.00011](#).
- ²⁶L. N. Cooper, Bound Electron Pairs in a Degenerate Fermi Gas, [Phys. Rev.](#) **104**, 1189 (1956).
- ²⁷H. Frohlich, On the theory of superconductivity: the one-dimensional case, [Proceedings of the Royal Society of London. A. Mathematical and Physical Sciences](#) **223**, 296 (1954).
- ²⁸S. H. Park, M. Kim, T. S. Chair, and W. S. Kim, The Dependence of the Critical Temperature on the Dimensions of the Electron Motion, [J. Kor. Chem. Soc.](#) **40**, 401 (1996). (Language, Korean)
- ²⁹A. Mourachkine, Room-Temperature Superconductivity, [arXiv:cond-mat/0606187](#).
- ³⁰Y. Zhang, B. Wang, Z. Xiao, Y. Lu, T. Kamiya, Y. Uwatoko, H. Kageyama, and H. Hosono, Electride and superconductivity behaviors in Mn_5Si_3 -type intermetallics, [npj Quantum Mater.](#) **2**, (2017) 45.